

Product Information

8" Digital Photo Frame + Camera – Mona Lisa

Worldwide No.1

8" Digital Camera (8" Digital Photo Frame + 5 Mega-pixel Camera)



❖ **Product concept**

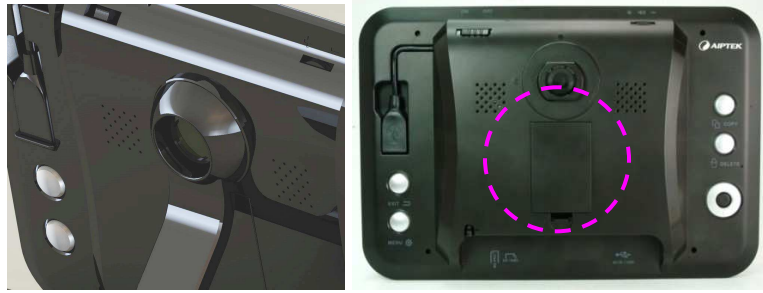
- A product integrates the features of digital camera and digital photo frame. Mona Lisa is embedded 1GB flash memory, Li-Ion battery, and digital camera with 5 mega-pixel auto focus, making it the ideal product for grandpa and grandma who don't use PC to download the pictures from digital camera. You simply need to remove the stand, hold the digital photo frame, and press the shutter button. Then it's done!
- Mona Lisa provides the easiest way to turn old pictures into digital ones. It is equipped with an extendable stand for holding pictures up to 10x15cm (4" x 6"). Simply a press of the shutter button, the picture is captured and displayed on the 8" digital screen.
- Go green!--Sleep mode (Auto off) function enables the digital photo frame to automatically turn off in 30 minutes and up to 8 hours to make power-saving

❖ **Product features**

- 8" TFT LCD screen (800 x 480 pixels) for playing back memorable pictures
- 5 mega-pixel camera with auto focus for taking snapshots (5 or 3 Mega-pixel pictures)
- Removable and extendable stand for digitizing old pictures up to 10x15 cm
- Auto slideshow with multiple transition effects supported
- Supports high resolution pictures up to 16 Mega-pixel
- Support 1GB internal flash memory, SD, MMC, MS Pro card, and USB flash drive
- Included rechargeable Li-Ion battery for portable usage
- Sleep Mode as Auto Off function to save power
- Calendar, clock, and Alarm
- Li-Ion battery and Remote control supported

Product Information

8" Digital Photo Frame + Camera – Mona Lisa



5 Mega-pixel camera (Left) Li-Ion battery for portable Usage (Right)



Extendable Stand (folded)

Extendable Stand (unfold)

Built-in Stand (Right)

Technische Daten / Specifications

Model Code	P8V2S	
LCD Display	LCD Display	8-inch TFT LCD, 158 x 99mm, 16:9 aspect ratio
	Resolution	800 x 480 pixels
	Viewing angle	55 degree
	Brightness	300 cd/m ² , brightness adjustable
	Contrast	300:1
Digital Camera	Image sensor	5 mega-pixel (2592x1944)
	Resolution	Best : 5 MP (2592x1944), Fine: 3 MP (2048x1536)
	Lens	Auto-focus lens
	Make old pictures digital	Yes, supports 9x13cm (4" x 6") and 10x15cm (3" x 5") photos
Photo Playback	Format	JPEG
	Max. resolution	16 Mega-pixel
	Auto slide show & effect	Yes
	Slideshow Speed	5sec / 10 sec / 15 sec / 30 sec / 1min / 3min / 5hr / 10hr / 24hr
	Picture rotation	90° and 180°
Placement	Rotation	Landscape only
File management	Function	Copy, Delete (from external memory to internal memory)
Memory Support	Internal memory	1GB (Best mode: 1000 pics, Fine mode: 3000 pics)
	SD/MMC/MS Pro Card	Yes, Max. card capacity 8 GB
	USB Flash Drive	Yes
Power Supply	AC-input	100~240V, 50~60 Hz
	DC-output	5V, 2A
	Battery	NP-120 1600Am Li-Ion rechargeable, direct charging from power adapter
	Power Consumption	About 5W 1A
Date & Time	Clock, Calendar, Alarm	Yes
	Sleep Mode (Auto-off)	Yes, off / 30mins / 1hr / 2hr / 4hr / 8hr
Interface	Operating Button	Digital photo frame mode, Camera /Shutter mode, Menu/ setting, Exit

Product Information

8" Digital Photo Frame + Camera – Mona Lisa

		Power, Volume, Copy, Delete, 4-way navigating button (up, down, right, left)
	USB	USB 2.0 high speed, retractable in the device
	Remote Control	Yes
	OSD Language	EN/FR/DE/IT/PT/ES/NL/PL/RU/TK
	Giftbox & Manual	EN/FR/DE/IT/PT/ES/NL/PL/RU/TK
Others	LED light	Digital photo frame mode, Camera/Shutter mode, battery charge mode
Dimensions & Weight	Dimension	270x180 x30mm (without stand), 270x180 x170mm (stand folded) 270x180 x240mm (stand extended)
	Weight	610g (without stand), 710g (with stand)
Software Bundle	ArcSoft Photo Impression, ArcSoft Media Converter	
Accessories	Power Adapter, NP-120 Li-ion battery, Remote control, Stand, User's manual, Application CD	
Logistische Daten / Logistic Data		
Maße Einzelverpackung /Dimension/Giftbox	338 x 220 x 63 mm (LxWxH)	
Gewicht Einzelverpackung /Weight/Giftbox	1520g	
Inhalt/Karton / Pcs/carton	10	
Maße/Karton/ Dimension/carton	359 x 335 x 461mm (LxWxH)	
Gewicht/Karton/ Weight/carton	16.4KG	
AIPTEK-Art.Nr.	420064 (EU adapter), 420064-UK (UK adapter)	
EAN-Code	4719851874468	